

STUER-EGGHE

SILKE



**MULTI
AFSPÆRRING**
86 62 99 00



SILKE MASH – CEN/TS

Worlds most versatile TMA

The "Silke", developed and tested in 2021, is the **world's most universal crash attenuator** available on the market today. The Silke is real top technology put into a new jacket. We have succeeded in developing the Silke into the first truck mounted attenuator **that meets no less than 2 different test criteria**. On the one hand it complies with the MASH -2016 tests, on the other hand Silke has passed the new CEN/TS 16787 regulations with flying colors.

Compatible on 1 system

In addition, the Silke is built on the existing docking system which ensures that the **entire range of Stuer-Egghe crash absorbers is compatible on 1 system**, providing incredible flexibility to the end user.

Through extensive technological innovations, we have also succeeded in **reducing the debris** so that a roadway can be cleared more quickly after an impact.



STUER-EGGHE

RUN SMOOTH AS SILKE

- ✓ 1 TMA = 2 different testlevels
- ✓ Safety lock to prevent the TMA from shifting to a driving position when not fully retracted.
- ✓ Silent blocks to prevent the moving parts from vibrating against each other when driving.
- ✓ Easily to (dismount) with the help of a forklift.
- ✓ Controlled by elektro-hydraulic motor
- ✓ An open structure to provide easy maintenance
- ✓ Stageless design to absorb the energy of an impact



STUER-EGGHE

Test level

Total weight supporting vehicle including TMA + Signalisation panel

CEN/TS 16786

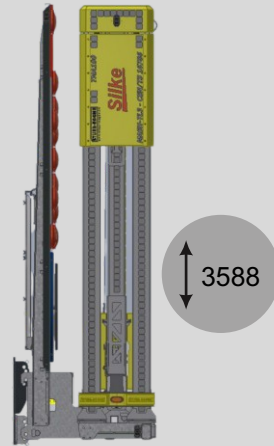
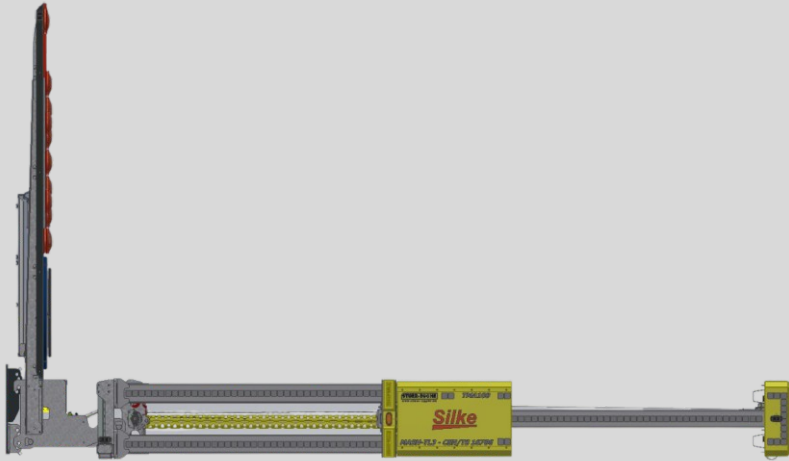
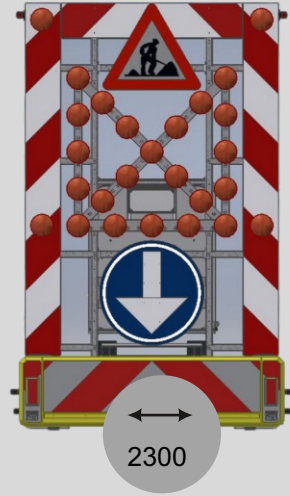
100 km/h
6.500 to 15.000kg

Test level

Total weight supporting vehicle including TMA + Signalisation panel

MASH 2016-TL3

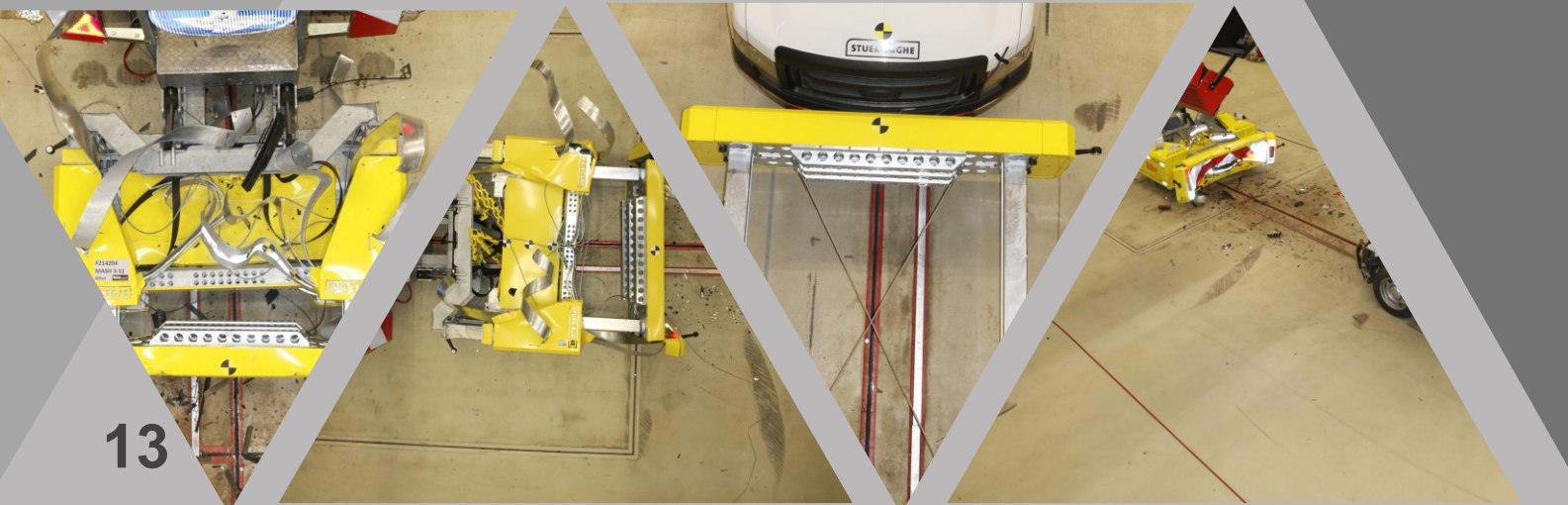
100 km/h
6.500kg to unlimited



295

6336

1143



STUER-EGGHE

DISCOVER THE UNIQUE FEATURES OF THE SILKE

Signalisation frame can be customized to individual needs

Available in different colours

Easily accessible for maintenance

Integrated silent blocks to avoid any trembling when driving

Mash 2016 & CEN/TS 16786 approved

Safety system integrated to avoid any debris in case of impact





STUER-EGGHE

ONE DOCKING THAT FITS ALL

Continuity is essential in this **rapidly changing industry**. New legislations, new & modern trucks require more and more adaptations to the existing systems and technologies and are one of the great challenges of tomorrow.

At Stuer-egghe, we therefore offer **1 versatile solution** to serve all these needs. Based on our **more than 30 years of experience** and technological developments & innovations, we have succeeded in using 1 docking system that offers an answer to no all **3 existing test levels** on the market today.

The docking system can be used for both the **NCHRP350 & CEN/TS and MASH** which is unprecedented in this industry. This gives unprecedented flexibility to the end customer as no major structural changes need to be made to the assembly and costs can be reduced.